

# Greetings to all future CSI Leaders from the Middle Atlantic Region CSI!

And yes that is exactly what you are! As CSI Student Members you Will-Bee Leaders-in-Training for our wonderful world of building design and construction. (do you think there's a theme going on here!?) The first step is getting involved in CSI at the Region and Institute levels.

Your Academic Liaison in your local chapter is your best bet for information about activities at your Chapter and Region. Getting involved at the Chapter level exposes you to networking opportunities with all of the professionals involved in the design and construction process you won't have elsewhere. Who knows you could find a future employer.

For Institute activities, with the return of the CSI Show and Convention to the June timeframe, it provides the opportunity for you to join us in Baltimore Maryland to continue a wonderful tradition and many a fond memory for CSI Student Members (and for many "not so young" CSI Members) that participate in the Student Events at the CSI Show and Convention. Check out the history of the SEC in past years on the CSI Show page and at the CSI Student Member Website ([http://www.csinet.org/s\\_\\_csi/docs/13200/13159.pdf](http://www.csinet.org/s__csi/docs/13200/13159.pdf) and [www.csi-s.org](http://www.csi-s.org)).

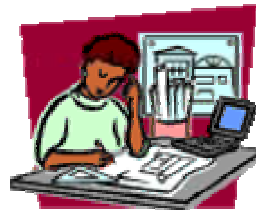
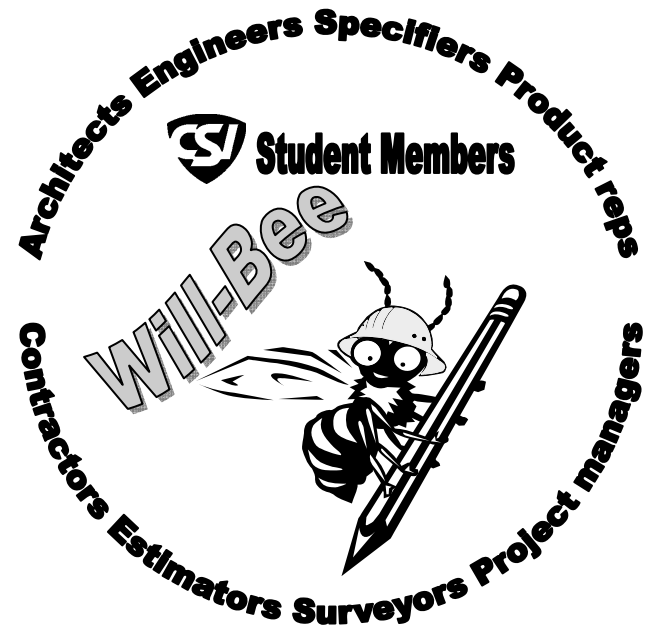
The Middle Atlantic Region is in the planning stages for special events including a Social for Students to meet up and network to discuss the coming week at the CSI Show, a possible job site tour of a project within walking distance of the Conference Center, and a Student Competition, dubbed "PUTTING DESIGN INTO ACTION; Building what you specify" where each team will take a basic house design from Habitat for Humanity and find information at the CSI Show Exhibition to improve it for esthetics, cost, efficiency, and modify it for a (hopefully) real family in the Gulf Coast area for whom the house will be built.

Something new this year, seasoned CSI Conventioneers are being recruited to mentor students at convention. In other words, provide advice to our convention rookies on where to be and when, and how to find out information to get the most out of convention; perhaps attend some seminars/events together. Some of them may also work with a team as an advisor in the competition.

All in all, it's going to be great fun, an opportunity to grow in your chosen studies and to get to know those of us working in the "real world" of design and construction.

Let us know if you are thinking of coming and we will keep you up to date on the planning:  
([http://www.csinet.org/s\\_\\_csi/form.asp?CID=1766&DID=13163](http://www.csinet.org/s__csi/form.asp?CID=1766&DID=13163))

We look forward to seeing you here in Baltimore in June of 2007 at the 51st CSI Show and Convention.



PUTTING DESIGN INTO ACTION;  
Building what you specify

